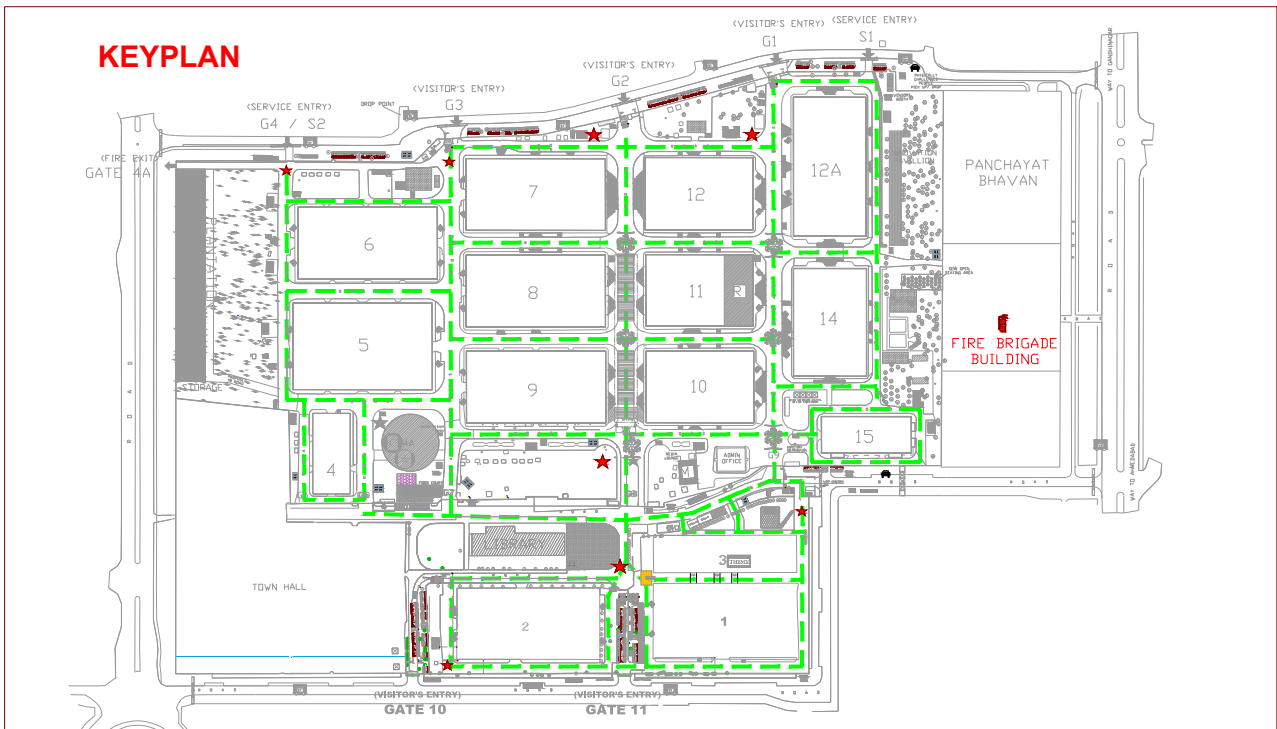
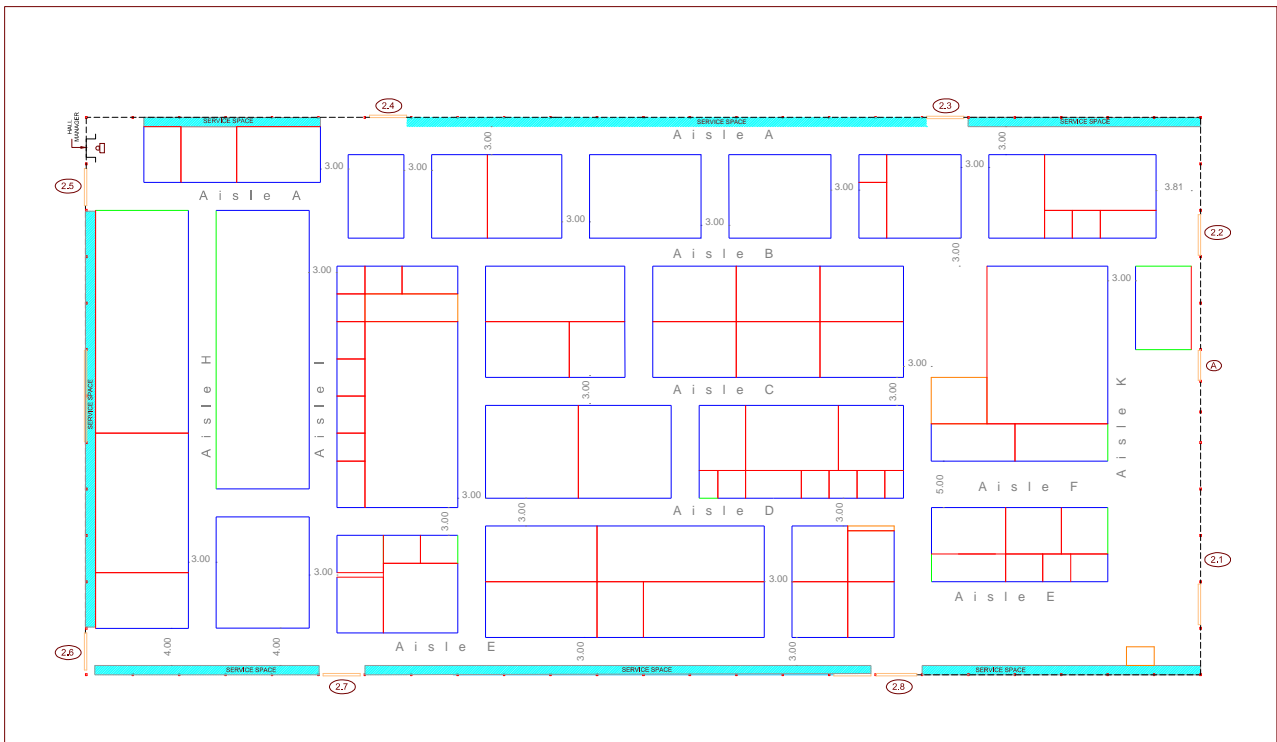


HALL- 02

EMERGENCY EVACUATION PLAN



| | | |
|-------------------|-------------|---|
| EXIT | EXIT | IN CASE OF EMERGENCY: 1.EVACUATE TO EMERGENCY EXITS IMMEDIATELY. 2.CALL 100/ 101/ 103. 3.MEET AT THE ASSEMBLY POINT NEARBY. |
| EVACUATION ROUTE | | |
| FIRE EXTINGUISHER | | |
| ASSEMBLY POINTS | | |