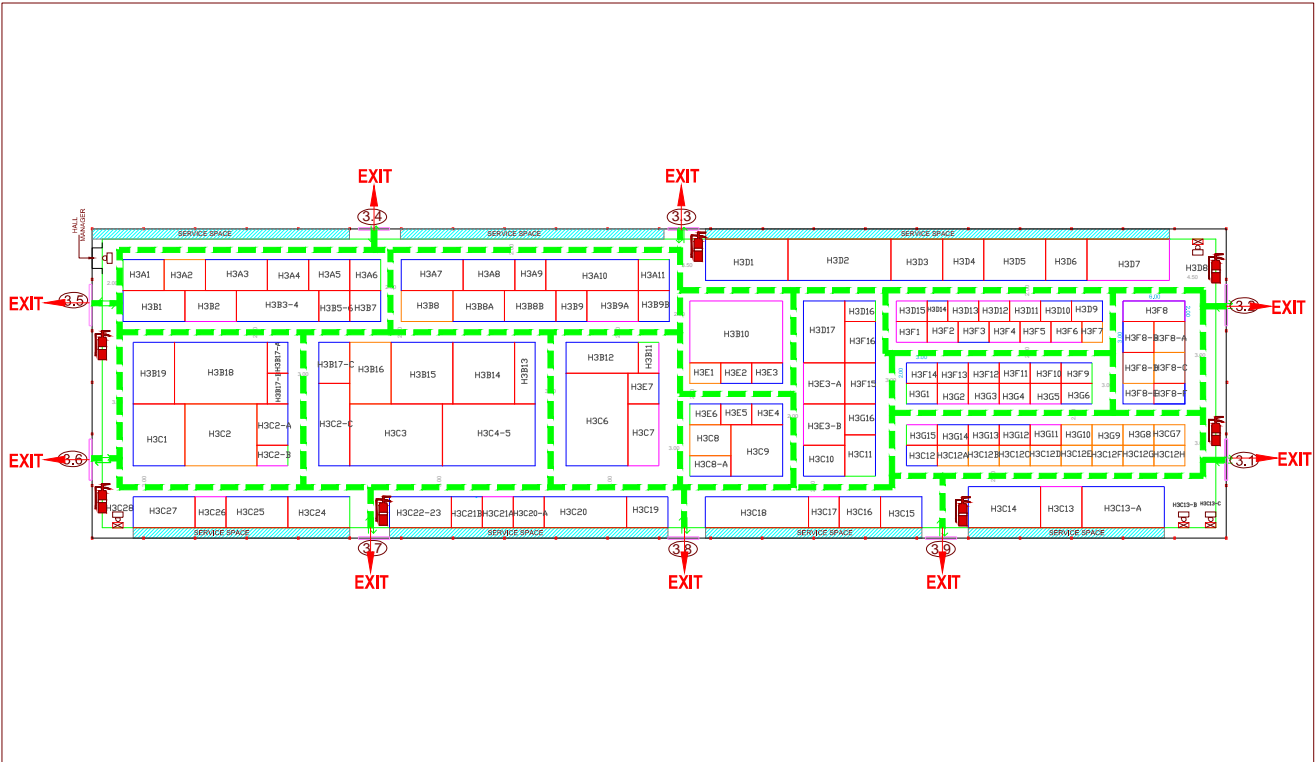
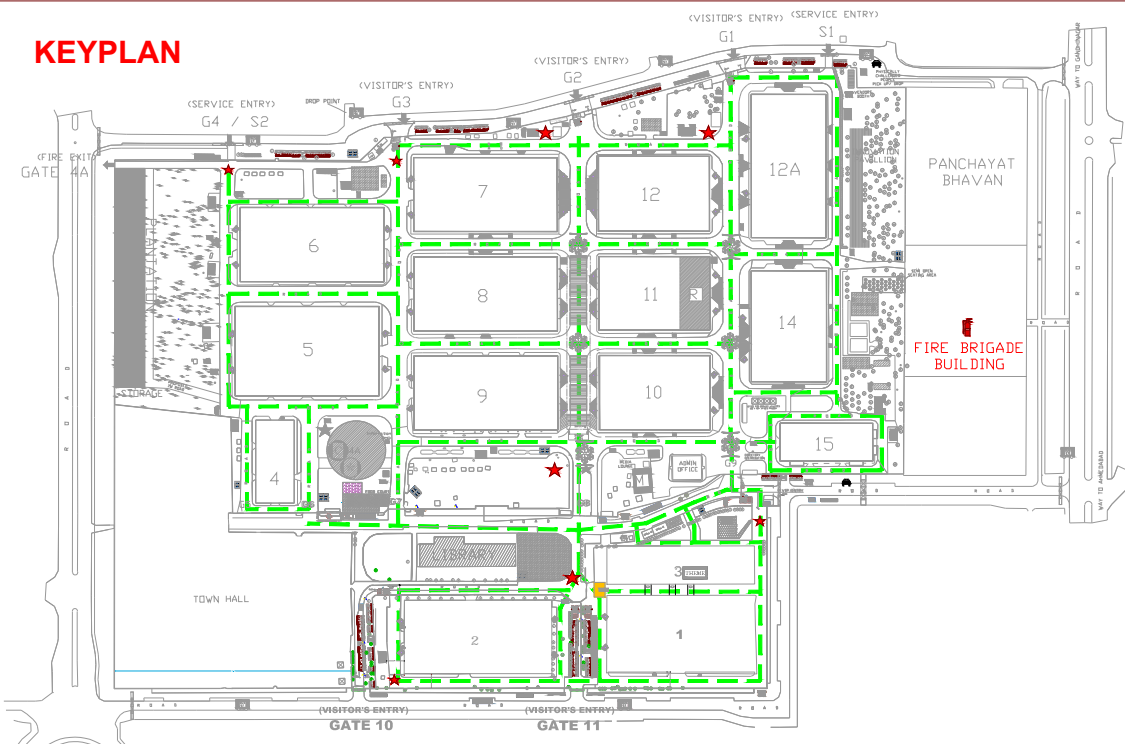


HALL- 03

EMERGENCY EVACUATION PLAN



KEYPLAN



EXIT	EXIT	IN CASE OF EMERGENCY: 1. EVACUATE TO EMERGENCY EXITS IMMEDIATELY. 2. CALL 100/ 101/ 103. 3. MEET AT THE ASSEMBLY POINT NEARBY.
EVACUATION ROUTE		
FIRE EXTINGUISHER		
ASSEMBLY POINTS		