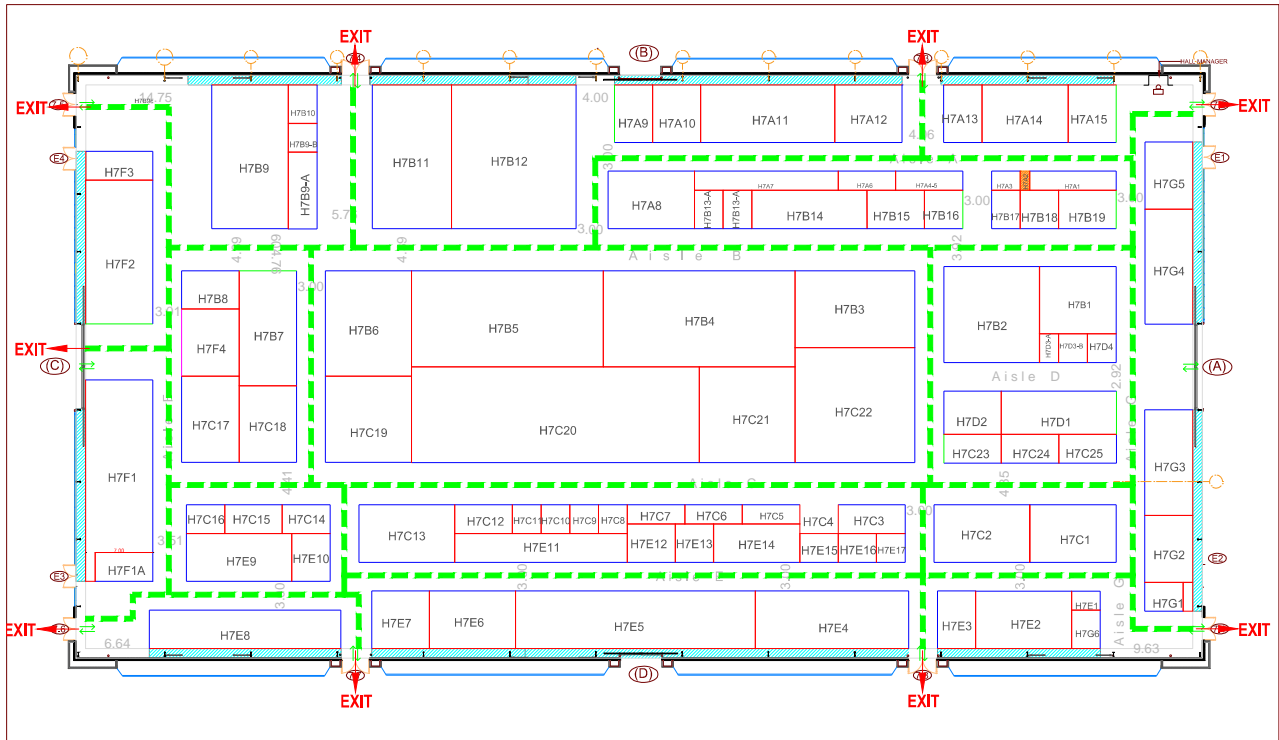
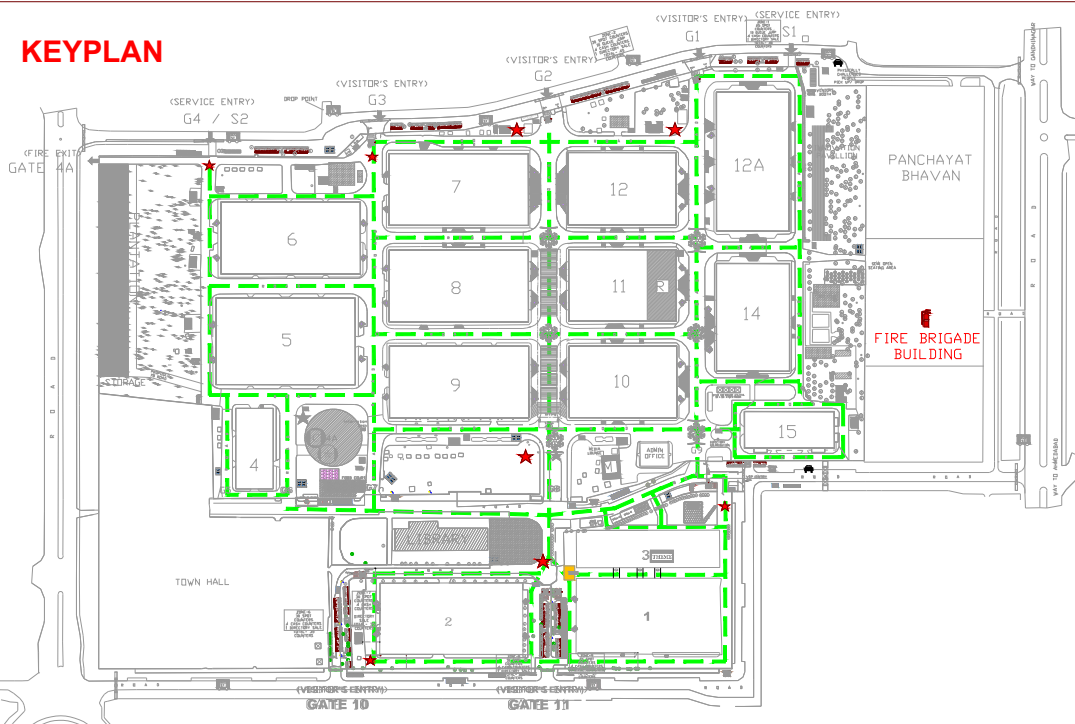


HALL- 07

EMERGENCY EVACUATION PLAN



KEYPLAN



EXIT	EXIT	IN CASE OF EMERGENCY: 1.EVACUATE TO EMERGENCY EXITS IMMEDIATELY. 2.CALL 100/ 101/ 108 . 3.MEET AT THE ASSEMBLY POINT NEARBY.
EVACUATION ROUTE		
FIRE EXTINGUISHER		
ASSEMBLY POINTS		